

Modular Architecture con .NET



Sabato 30 settembre 2023



<Alberto Acerbis> 

SPONSORS



No Silver Bullets



The complexity of software is an essential property, not an accidental one. Hence, descriptions of a software entity that abstract away its complexity often abstracts away its essence.

— Fred Brooks —

AZ QUOTES

Monolithics

A monolithic architecture is a traditional model of a software program, which is built as a unified unit that is self-contained and independent from other applications.

Microservices

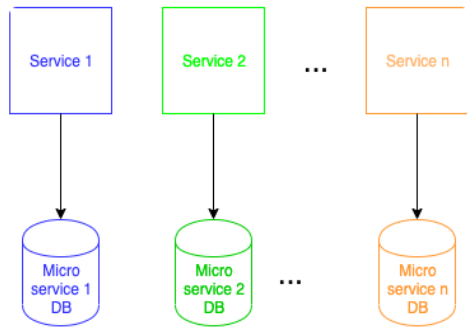
Microservices are self-contained small services that handle specific business functions within clearly defined boundaries known as Bounded Context.

No Best Practice

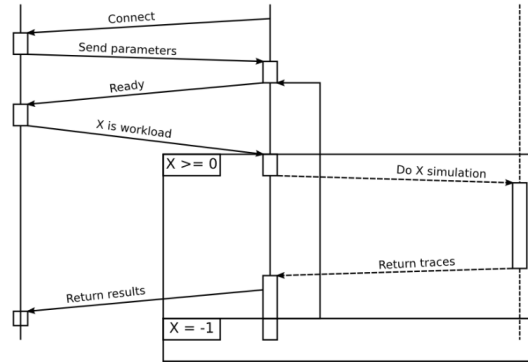
Why have architects
struggled with
decisions in
distributed
architectures?

Why has the complexity
ramped up so much with
microservices?

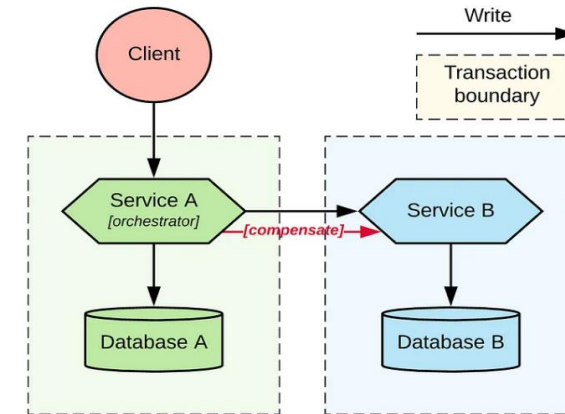
Microservices Traps



Data Decomposition



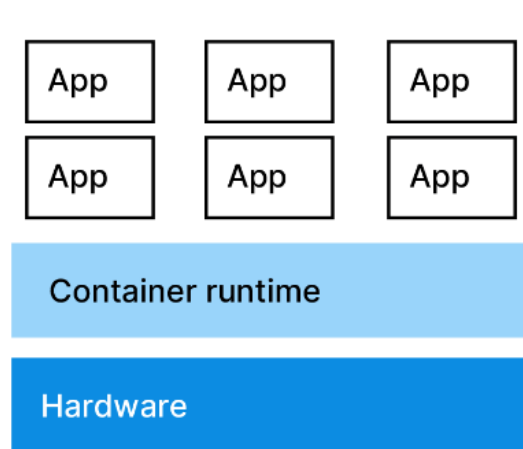
Distributed Workflow



Distributed Transaction



Operational automation



Containerization

A Matter of Dimensions?



Modularity

Granularity

Granularity
Disintegrators

Granularity
Integrators

Granularity Disintegrators



Service Scope
and function

Code
Volatility

Scalability and
throughput

Fault
Tolerance

Security

Extensibility

Granularity Integrators



Database
Transactions

Workflow and
Choreography

Shared Code

Database
Relationships

Software Architecture

Software Architecture is
the stuff you can't
Google Bing answers for.

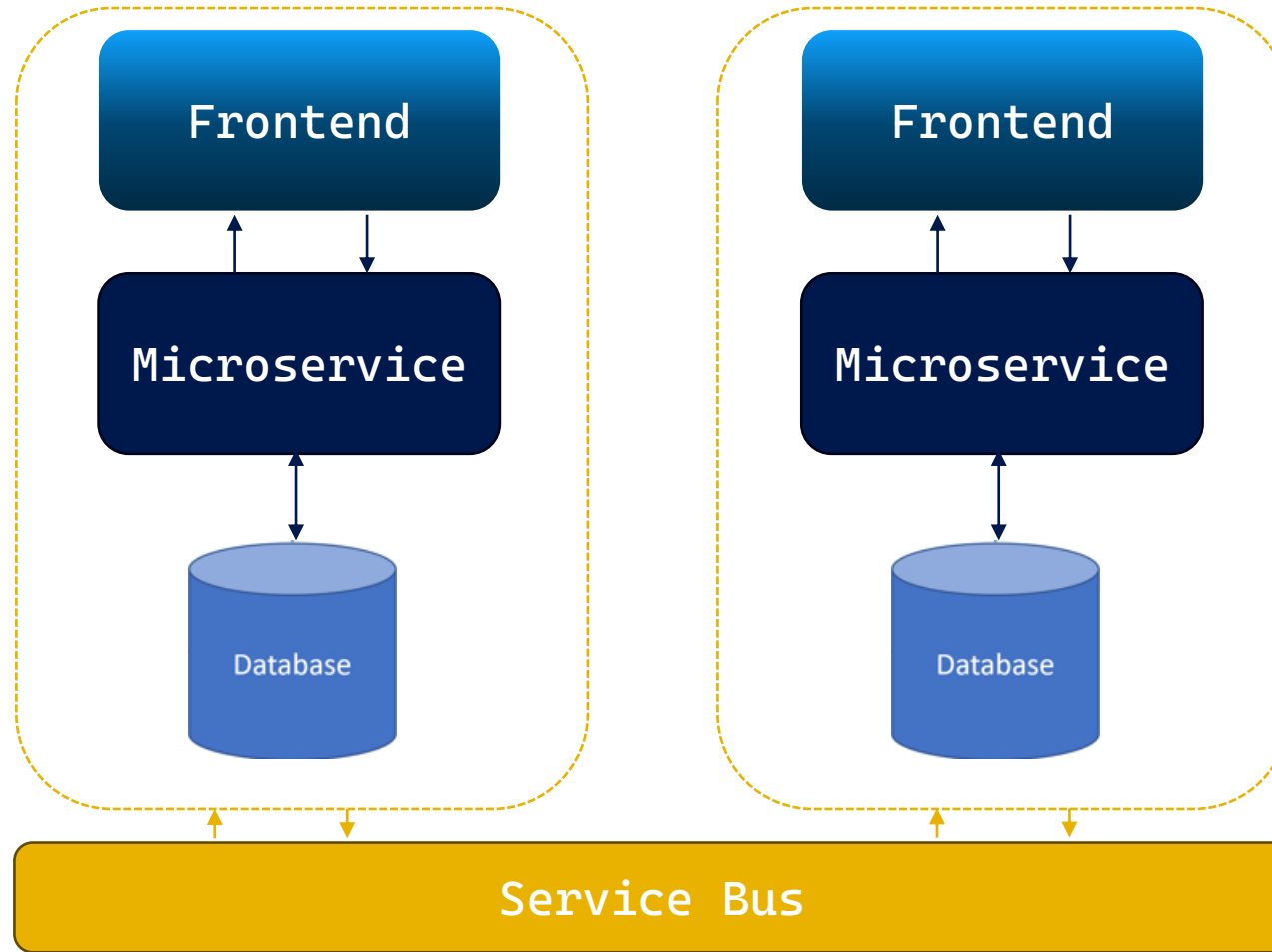
Hamletic doubt



What is
Essential?

What is
Accidental?

Quantum Architecture



Laws of Software Architecture

First Law

Everything in software architecture is a trade-off

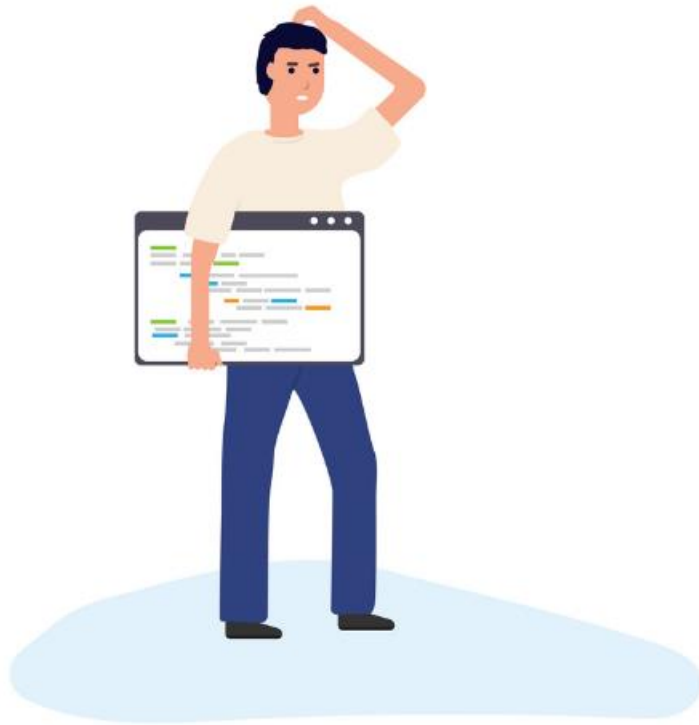
Corollary 1

If an architect thinks they have discovered something that isn't a trade-off, more likely they just haven't yet identified the trade-off

Second Law

Why is more important than how

Where do I start from?

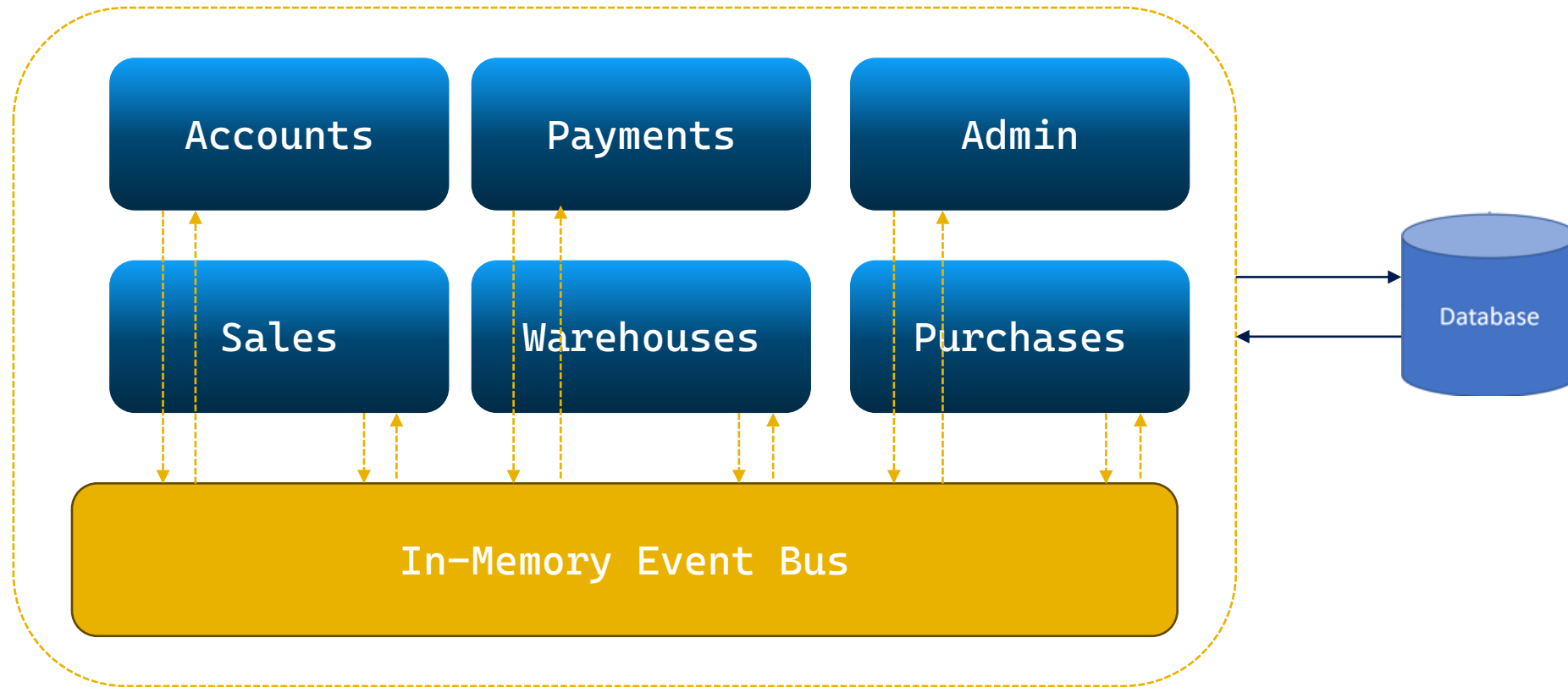


Risk comes from
not knowing what
you are doing

(Warren Buffet)

If you think good
architecture is
expensive,
try bad
architecture

Modular Architecture



Kamil Grzybek

What is a Module?



Low Coupling

Each module should be independent of other modules in the system

High Cohesion

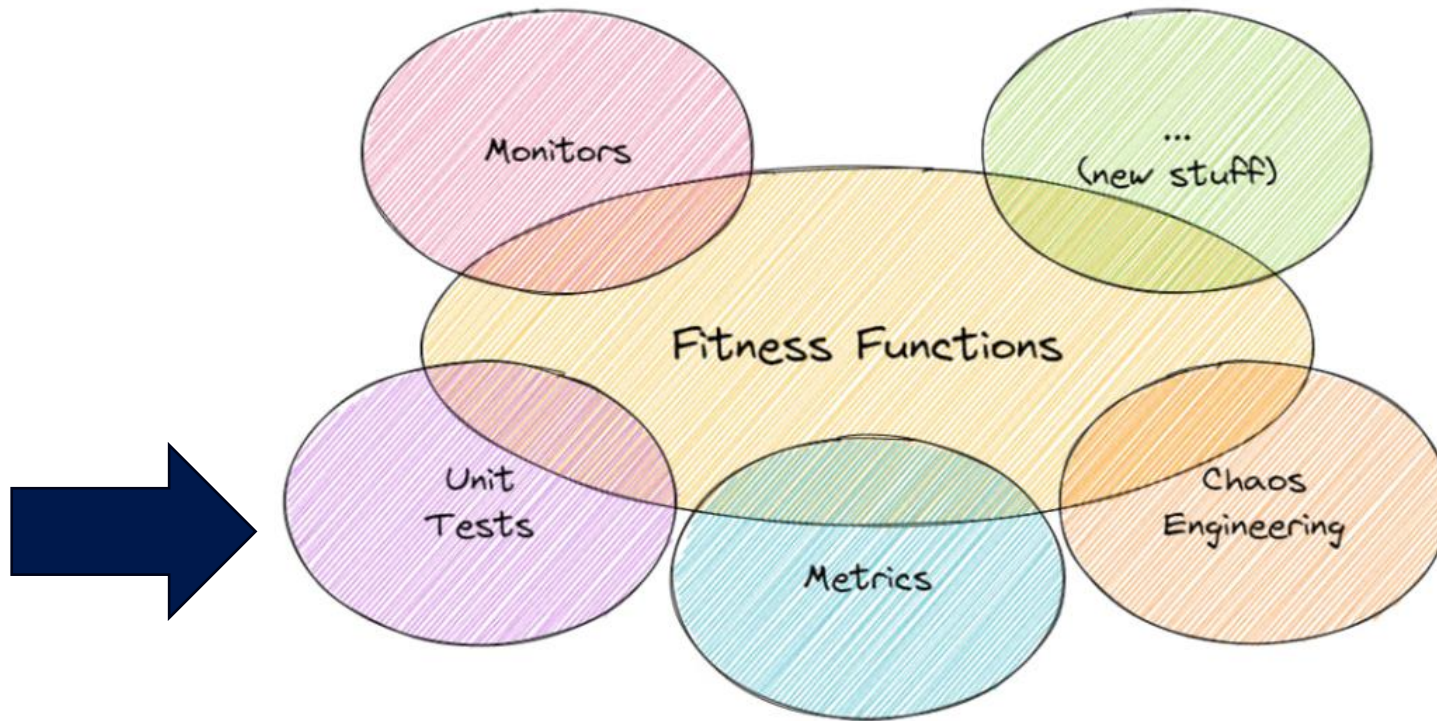
Components of the module are all related thus making it easier to understand what module does as a self-contained subsystem

Attempting to divide a cohesive module would only result in increased coupling and decreased readability

Demo

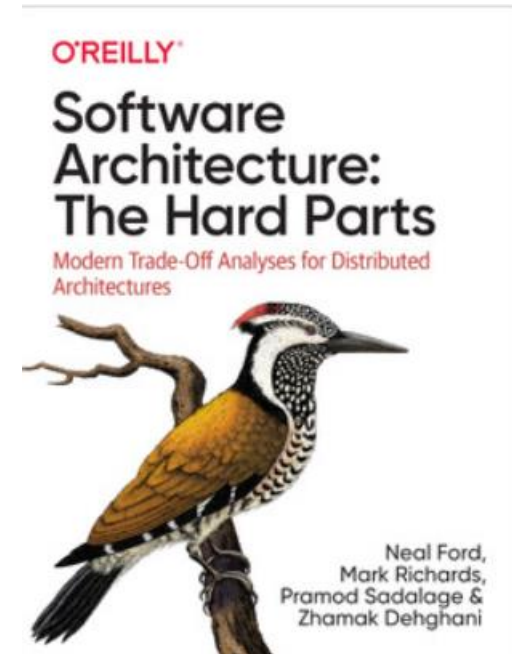
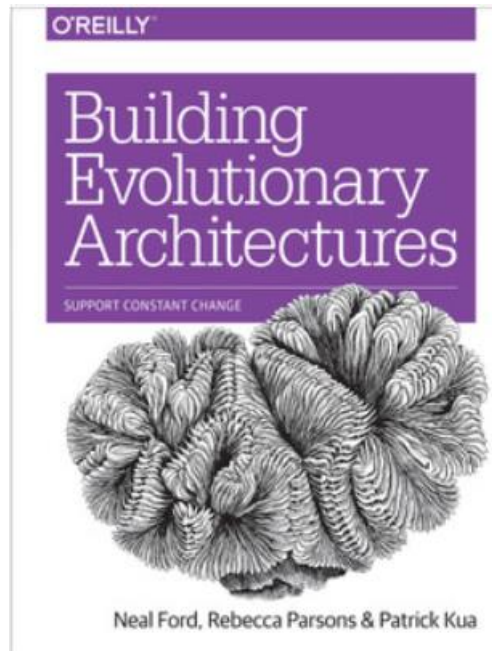
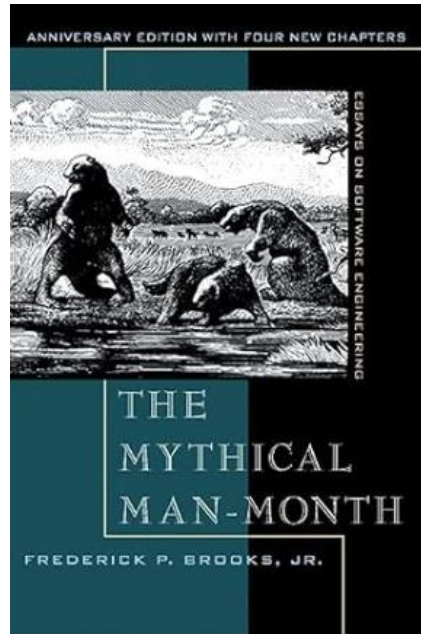
Fitness Functions

- An architectural fitness function provides an objective integrity assessment of some architectural characteristic(s).



Demo

Books



Thanks!



Sabato 30 settembre 2023

IL CORSO

Introduzione a **DDD**, **CQRS** ed i loro **pattern**

Costruire un'applicazione completa
(a microservizi) applicando DDD.

Prenota il tuo posto



alberto.acerbis@intre.it



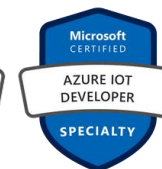
<https://github.com/brewup>



<https://github.com/cqrs-muflone>



<https://github.com/ace68>



Alberto Acerbis

